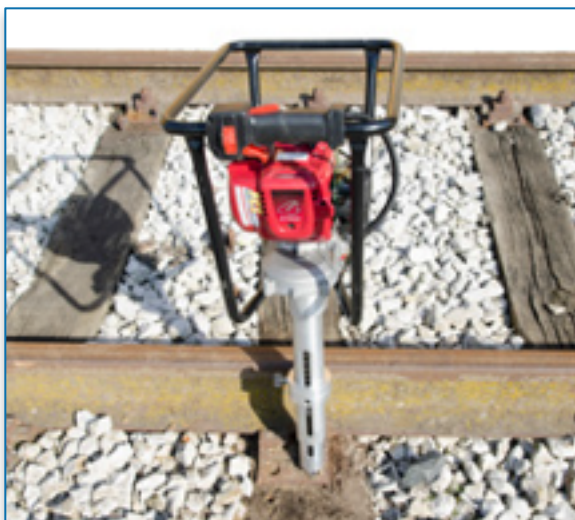


## Foratraverse portatile

### Portable sleepers drilling machine



|  |          | FTP 950 P | FTP 950 E |
|--|----------|-----------|-----------|
| Motore a Benzina/<br>Elettrico   | kW       | 1,1       | 2         |
| Diametro max di<br>foratura  | mm       | 25        | 25        |
| Peso a secco   | daN [kg] | 13        | 22        |

|  |          | FTP 950 P | FTP 950 E |
|--|----------|-----------|-----------|
| Petrol/Electric Engine   | kW       | 1,1       | 2         |
| Drilling diameter max  | mm       | 25        | 25        |
| Dry weight   | daN [kg] | 13        | 22        |